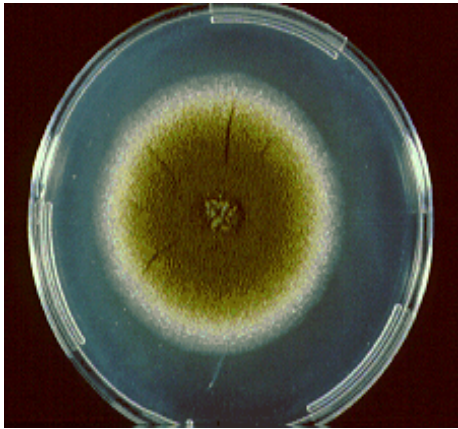
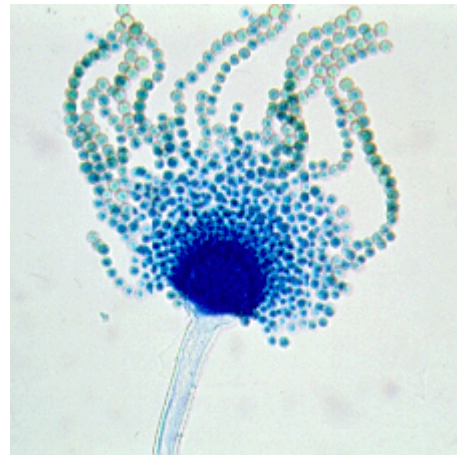


Mold of the Month October 2005

Aspergillus flavus



Culture of *A. flavus*



Conidial head of *A. flavus*

Colony Description

On Czapek Agar (CZA), colonies are granular, flat, often with radial grooves, yellow at first but quickly becoming bright to dark yellow-green with age. On Malt Extract Agar (MEA), colonies are olive or occasionally dark green.

Microscopic Morphology

Conidial heads are typically radiate, mostly 300-400 μm in diameter, later splitting to form loose columns, biserial. Conidiophores are hyaline and coarsely roughened, the roughness often being more noticeable near the vesicle. Conidia are globose to ellipsoidal (3-6 μm in diameter), pale green and smooth to finely roughened walls.

Ecology

Aspergillus flavus has a world-wide distribution and normally occurs as a saprophyte in soil and on many kinds of decaying organic matter. It produces aflatoxins in certain foodstuffs such as peanuts. It colonizes decaying vegetation, crop seeds and many other substrates in indoor and outdoor environments.

Clinical significance

A. flavus is the second most common species (next to *A. fumigatus*) to be isolated from human infections, and it is often associated with invasive aspergillosis seen in immunosuppressed patients and in paranasal sinus infections.