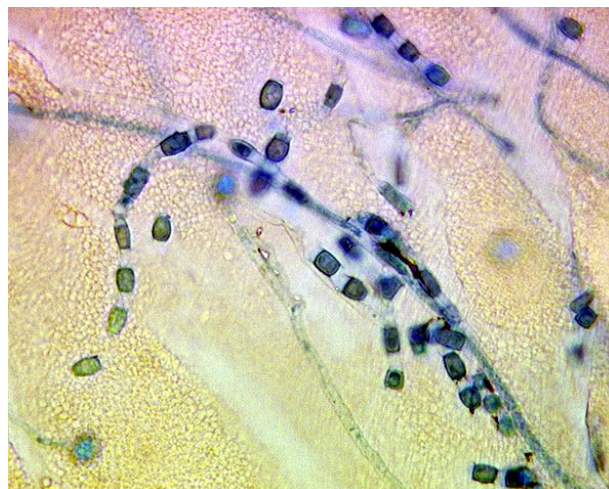
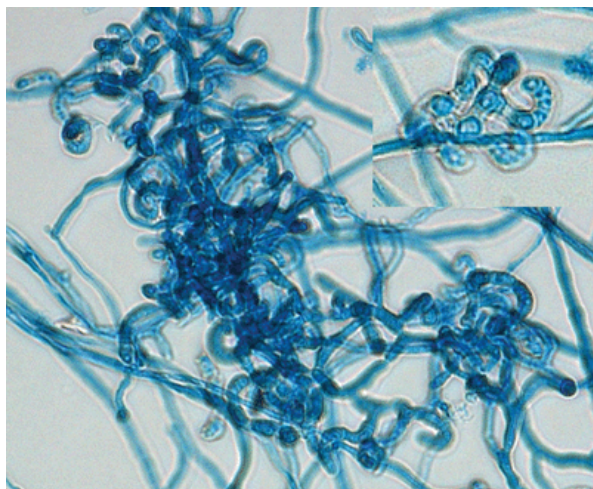


Mold of the Month November 2009

Malbranchea sp.



Left: Arthroconidia of *Malbranchea* sp. Right: Spores of *Malbranchea* sp.

Colony Description

The colonies of *Malbranchea* grow moderately rapidly at 25°C. They are raised or flat, with or without furrows, and powdery, woolly, or cottony in texture. The color of the colony may be white, orange, buff, tan, brown, or dark golden.

Microscopic Morphology

Malbranchea produces hyphae and arthroconidia. Sclerotia may be formed. Conidiophores are absent. Hyphae are septate and hyaline. Arthroconidia are one-celled, cylindrical, straight or curved, truncate, hyaline to greenish-yellow and not wider in diameter than the hypha that bears them. Arthroconidia form straight fertile areas on the primary hyphae. Arthroconidia alternate with disjunctive (sterile and empty) cells and are released by the lysis or fracture of the disjunctive cells. Liberated arthroconidia bear annular frill.

Ecology

Malbranchea is a mould isolated from soil, decaying vegetation, and animal dung. It is commonly isolated as a contaminant. *Malbranchea* has teleomorphs classified in genera *Auxarthron*, *Uncinocarpus*, and *Myxotrichum*.

Health Effect

Malbranchea has been isolated from a case with sinusitis. No other infection associated with *Malbranchea* has been reported so far.