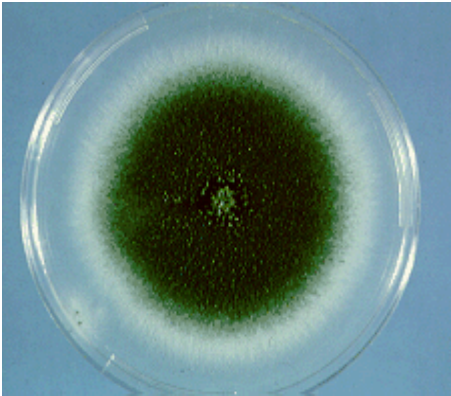
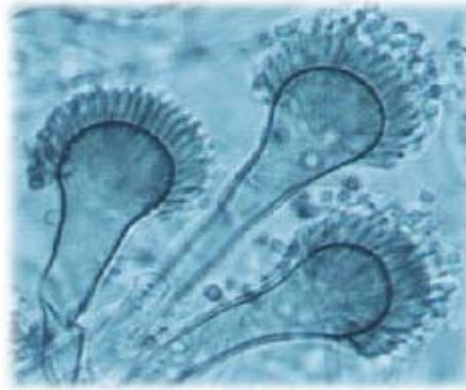


Mold of the Month November 2005

Aspergillus fumigatus



Culture of *Aspergillus fumigatus*



Conidial head of *A. fumigatus*

Colony Description

Colonies of *Aspergillus fumigatus* are dark blue-green to grey green on the surface, reverse pale or yellow. Colonies grow rapidly with downy to powdery texture.

Microscopic Morphology

Conidial heads are typically columnar and uniseriate. Conidiophores are short, smooth-walled and have conical-shaped terminal vesicles which support a single row of phialides on the upper two thirds of the vesicle. Conidia are produced forming long chains and are globose to subglobose, green and rough-walled.

Ecology

Aspergillus fumigatus is a cosmopolitan and thermo tolerant mold. It has been reported from a wide range of substrates in both indoor and outdoor environments including plants, soils, seeds, wood, compost, cotton and decaying organic debris. *Aspergillus fumigatus* is found mainly in warm habitats.

Clinical significance

A. fumigatus is a human and animal pathogen, causes systemic mycoses usually resulting from invasion of the lungs or respiratory tract (aspergillosis).

A. fumigatus is the most frequently isolated agent of aspergillosis in humans. It may cause pulmonary, nasal, ocular, bone, cardiovascular, and organ infection, particularly in the immunocompromised patient.