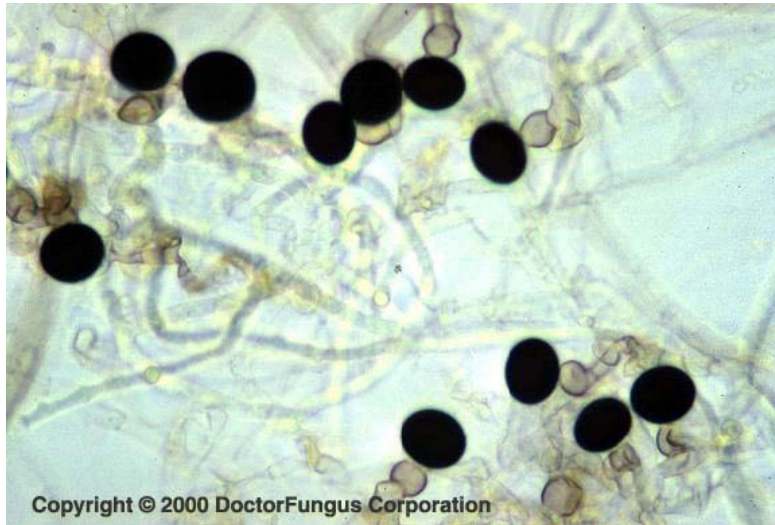


Mold of the Month May 2010

Nigrospora sp.



Nigrospora sp. produce conidiophores which forcibly discharge the conidia.

Colony Description

Nigrospora grows rapidly and produces woolly colonies on potato dextrose agar at 25°C. The colonies mature within 4 days. Color of the colony is white initially and then becomes gray with black areas and turns to black eventually from both front and reverse. Sporulation may take more than 3 weeks for some isolates.

Microscopic Morphology

Septate hyaline hyphae, hyaline or slightly pigmented conidiophores, and conidia are visualized. The conidiogenous cells on the conidiophores are inflated, swollen, and ampulliform in shape. They bear a single conidium (14-20 µm in diameter) at their apex. Conidia are black, solitary, unicellular, slightly flattened horizontally, and have a thin equatorial germ slit.

Ecology

Nigrospora is a filamentous dematiaceous fungus widely distributed in soil, decaying plants, and seeds. It is a common laboratory contaminant. Although it has been isolated from a few clinical samples, its pathogenicity in man remains uncertain.

Health Effect

Nigrospora has been isolated from cutaneous lesions of a leukemic patient and from a case with keratitis. However, its pathogenic role as a causative agent is not well-known.