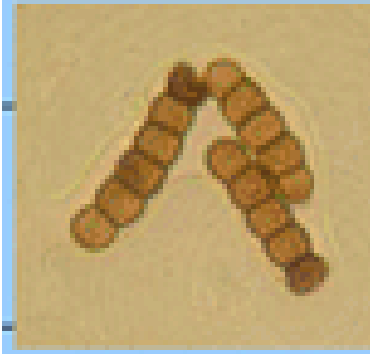


Mold of the Month: March 2007

Torula sp.



Conidia of *Torula sp.*



Colonies of *Torula sp.*

Colony Description

Colonies are rapid growing, surface is dark brown and texture is cottony. Reverse is black.

Microscopic Morphology

Hyphae are septate and light to dark brown. Conidiophores are un-branched or irregularly branched, light to dark brown, smooth or rough. The conidial chains break up into conidia that are typically 4-6 cells. Conidia are olive, brown or dark brown.

Ecology

Torula sp. has worldwide distribution but is very common in temperate climates. It can be isolated from air, soil, decaying plants, wood, sugar beet root, groundnuts, oats, fresh water, sea water, bird nesting materials, and nuts. *Torula sp.* is commonly found indoors on cellulose containing materials.

Clinical significance

Torula sp. produces type I allergies (hay fever, asthma). There have been no reports of human infection. *Torula sp.* is capable of producing toxins (Cytotoxic), although the effects of these toxins are not well studied.