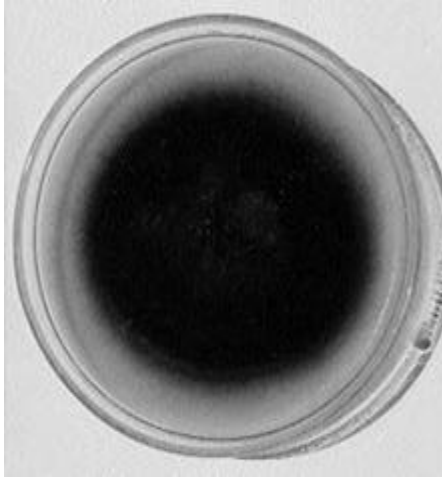


Mold of the Month – March 2006

Bipolaris sp.



Bipolaris sp. culture



Bipolaris sp. conidia and conidiophores

Colony Description

Colonies are moderately fast growing and texture is downy. Colony color is whitish becoming dark olive to blackish brown. Reverse is dark brown to black.

Microscopic Morphology

Hyphae are dark in color and septate. Conidiophores elongate and bend at the point where each conidium is formed. Conidia are straight, fusiform to ellipsoidal, rounded at both ends, and appear thick walled and smooth to finely roughened with 3-7 transverse septations.

Ecology

Cosmopolitan and some species mainly found in tropical or subtropical areas. Saprophyte or pathogens of numerous species of plants, particularly grasses.

Clinical significance

This fungus can produce the mycotoxin - sterigmatocystin which has been shown to produce liver and kidney damage when ingested by laboratory animals. Several species are well documented human pathogens.