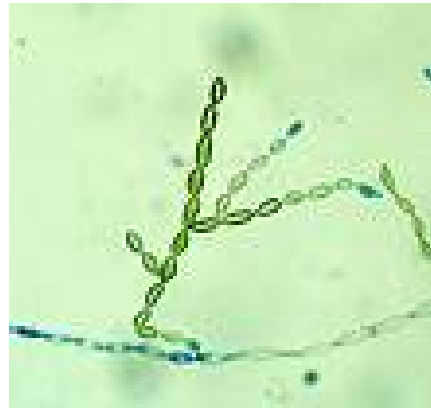
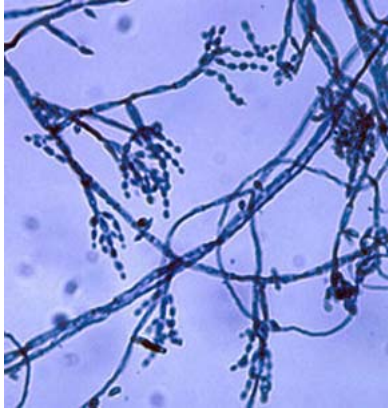


Mold of the Month July 2008

Cladophialophora sp.



Colony Description

The growth rate of *Cladophialophora sp.* is slow and restricted. The surfaces of colonies are powdery to wooly. The color of the colony is typically olivaceous green to black from the front, the reverse is black.

Microscopic Morphology

The hyphae are septate and brown in color. Conidia are 1-celled, smooth-walled, and lemon-shaped. They are arising in long coherent chains. The conidia are pale to dark brown. The youngest conidium is located at the apex of the chain. Conidial scars are nearly not pigmented. Their attachment scars are inconspicuous. As compared, *Cladosporium* scars are with pigmented attachments.

Ecology

Cladophialophora sp. is a dematiaceous mold. Its natural habitats are soil and rotten plant material. Some of the species are predominant in tropical and subtropical regions.

Health Effect

Cladophialophora sp. can cause skin lesions, phaeohyphomycosis, chromoblastomycosis, and mycetoma. Trauma and exposure to soil are main predisposing factors for acquiring infections. Some can cause infections by inhalation.