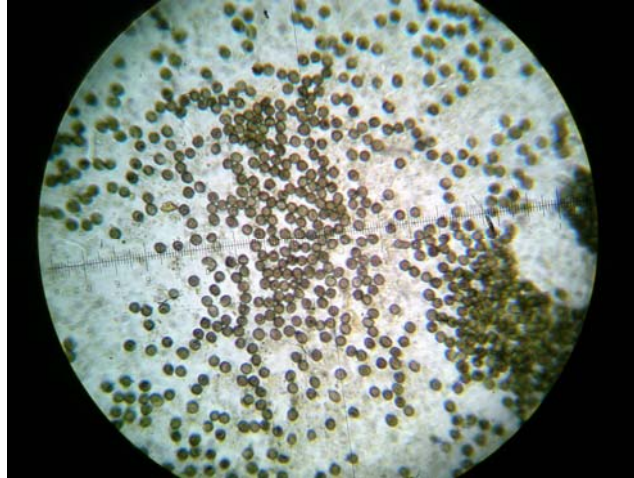


# Mold of the Month December, 2008

## *Dicyma sp.*



Conidia of *Dicyma sp*

### Colony Description

*Dicyma sp* is the anamorph of *Ascotricha* which is closely related to *Chaetomium*. *Dicyma sp* does not grow on the laboratory medium. The growth rate of the sexual phase is moderately rapid. Colonies are effuse, dark greenish grey, becoming black and velvety. Mycelium is immersed and superficial.

### Microscopic Morphology

The hyphae are septate and dark brown. Conidiophores are stiff, straight, and profusely branched. There are pale and thin-walled vesicles at the bends and terminals. Conidiogenous cells are lateral and terminal. Conidiogenous cells bear clusters of conidia on denticles. Conidia are spherical, varicose, and yellowish-olivaceous.

### Ecology

*Dicyma sp.* are saprophytic and feed on leaves, paper, cardboard, cotton wool, woody materials, and wallboard. *Dicyma sp* are isolated in Europe, India, New Zealand, North and South America.

### Health Effect

No information is available regarding health effects, toxicity, or allergenicity.