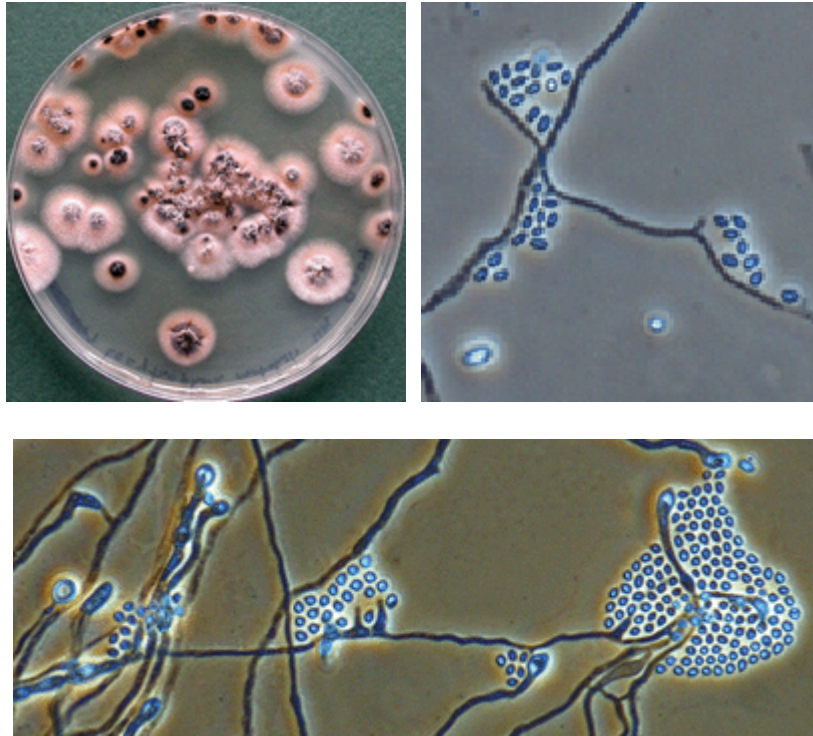


Mold of the Month August 2009

Lecythophora sp.



Culture, hyphae with small collarettes and conidia of *Lecythophora hoffmannii*.

Colony Description

The genus *Lecythophora* is a mold that lacks a known sexual state thus, is categorized under Fungi Imperfecti. It is generally classified as a dematiaceous fungus which is mainly attributed to its darkly colored fungal body due to the presence of melanin in the cell walls of its conidia, hyphae or both. There are three species classified under this genus namely, *Lecythophora hoffmannii*, *Lecythophora lignicola*, and *Lecythophora mutabilis*.

Colonies of *Lecythophora* sp. Are pink to salmon, later sometimes becoming blackish, smooth, often somewhat yeast-like. Hyphae hyaline to subhyaline, thin-walled. Conodiogenous cells poorly differentiated, usually lateral or intercalary, hyphae bearing one or several scattered, inconspicuous collarettes, either sessile or on small outgrowths. Conidia (sub)hyaline, smooth and thin-walled, broadly ellipsoidal, cylindrical, reniform or allantoids. Chlamydospores may be present.

Microscopic Morphology

- Hyaline and septate hyphae, adelophialides, conidia and chlamydospores are present;
- Adelophialides are type of phialides which are not septated at the base, short, cylindrical or conical in form, may often appear solitary, sometimes in groups that are arranged in short lateral filaments, however, phialides with septate bases are sometimes present;
- Conidia are hyaline, ellipsoidal to cylindrical in shape but may be slightly curved at times, and may give rise to secondary conidia occasionally;
- Brown – colored chlamydospores may sometimes be present.

<i>Lecythophora</i> species	Differences in Microscopic Appearance
<i>Lecythophora hoffmannii</i>	Produces pink colonies
<i>Lecythophora lignicola</i>	Produces brown mature colonies due to its formation of numerous brown chlamyospores
<i>Lecythophora mutabilis</i>	Produces colonies which become brown, however, in this case the brown – colored pigment develops in the hyphae alone, since chlamyospores are absent

Ecology

Lecythophora species are cosmopolitan and are occasionally isolated from soil and from plant debris.

Health Effect

Only two cases of cases of endocarditis have been reported from humans, one of gluteal abscess - and one of peritonitis which is an inflammation of the peritoneum tissue lining of the abdominal wall and most of the organs in the abdomen.