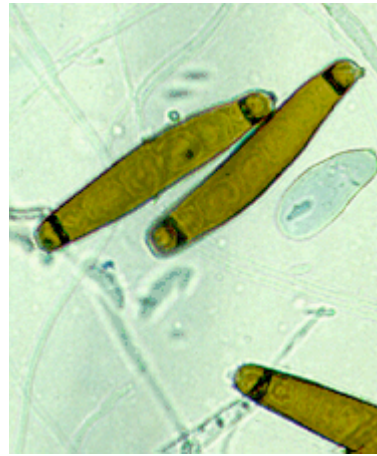


# Mold of the Month April 2009

## *Exserohilum* sp.



Conidiophores



Conidia of *Exserohilum rostratum*

### Colony Description

Colonies spreading, woolly or hairy, brown, grey or black. Conidiophores simple, thick-and-smooth-walled, olivaceous brown to brown, often with geniculate terminal portion, sometimes nodose, producing conidia from conspicuous, darkened scars. Conidia fusiform, cylindrical or obclavate, straight to curved, compartmented with pseudosepta, brown, with a protuberant hilum at the base. Furthermore, *Exserohilum* species grow rapidly on plant-based medium such as potato dextrose agar and produce woolly colonies that are pale initially but quickly become dark gray to bluish-black to brownish-black with a black reverse.

### Microscopic Morphology

Hyphae are septate and brown. Conidiophores may be up to 200  $\mu\text{m}$  long, are septate, simple (non-branched), geniculate, and become paler near the apex. Conidia are various shades of brown and may range from less than 80 to greater than 100  $\mu\text{m}$  in length, may be straight to distinctly curved, and contain 1 to over 12 septa. The feature all species share is a strongly protruding hilum from the basal cell. Conidia may be slow to form in culture.

### Ecology

*Exserohilum* is a phaeoid or dematiaceous filamentous fungus. The genus is close to *Bipolaris*, which differs by lacking protuberant conidial hila. It is cosmopolitan in nature inhabiting plant material, particularly grasses, and soil. Teleomorphs are contained within the genus *Setosphaeria*.

### Health Effect

The genus comprises plant-pathogenic species, mainly occurring on grasses. Mycoses are the mostly concerned cases in human. Sinusitis with cerebral involvement are reported in humans as well.