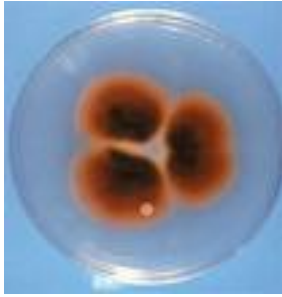
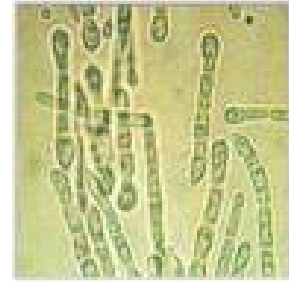


Mold of the Month April 2008

Cercospora sp.



Colonies of *Cercospora sp.*



Conidia of *Cercospora sp.*

Colony Description

Colonies are effuse. They are in brown or grayish. The reverse is dark brown. Mycelium are mostly immersed. Stroma are often present. There are about 2,000 species. Colonies reach from 3 to 6cm in diameter in 14 days.

Microscopic Morphology

Conidia are cylindrical to obclavate. They are terminal and septated. Scars at the base of conidia are usually conspicuous. Conidia are simple, colorless, and smooth. Conidiogenous cells are integrated and sympodial.

Ecology

Cercospora sp. is widespread along the coasts of the Atlantic, Pacific and Indian Oceans. They found on soils, plant remains, seaweeds and salt-marshes.

Health Effect

Cercospora sp. are often weak parasites on dead, dying plant tissue. It would cause serious injury to healthy plants as well. No negative health effects on humans have been noted.