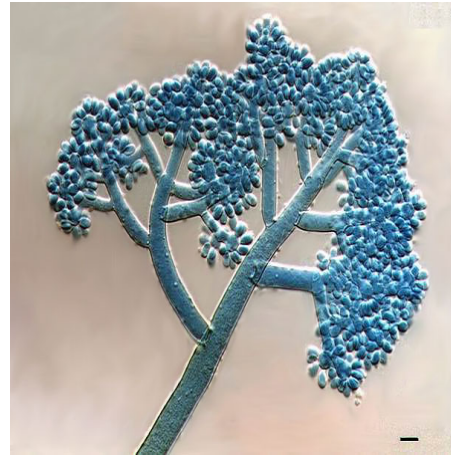


Mold of the Month April 2006

Botrytis sp.



Botrytis sp. culture



Botrytis sp. conidiophores and conidia

Colony Description

Botrytis sp. grows rapidly and the texture is woolly. The surface color of the colony is white at the beginning and becomes grey to brown. It produces sclerotia that appear as dark spots on the surface of the colony. Reverse is dark

Microscopic Morphology

Hyphae are septate, hyaline to brown and conidiophores are septate, brown, and large. Conidiophores branch at their apices and terminate in vesicles which bear conidia on their surfaces. The conidia are located on short denticles, hyaline to brown, unicellular, and round to oval in shape.

Ecology

Despite its cosmopolitan feature, it is more commonly reported from tropical and temperate areas. It is isolated from soil, stored and transported fruits and vegetables and decayed plant matters. *Botrytis cinerea* is the most common species that has a wide range of host plants as a parasite or saprophyte. It is also an important fungus in wine making.

Clinical significance

It is reported to be allergenic. It can cause Type I allergies (hay fever, asthma) and Type III hypersensitivity pneumonitis. No known toxin is reported. No cases of infection have been documented to date in human or animals.